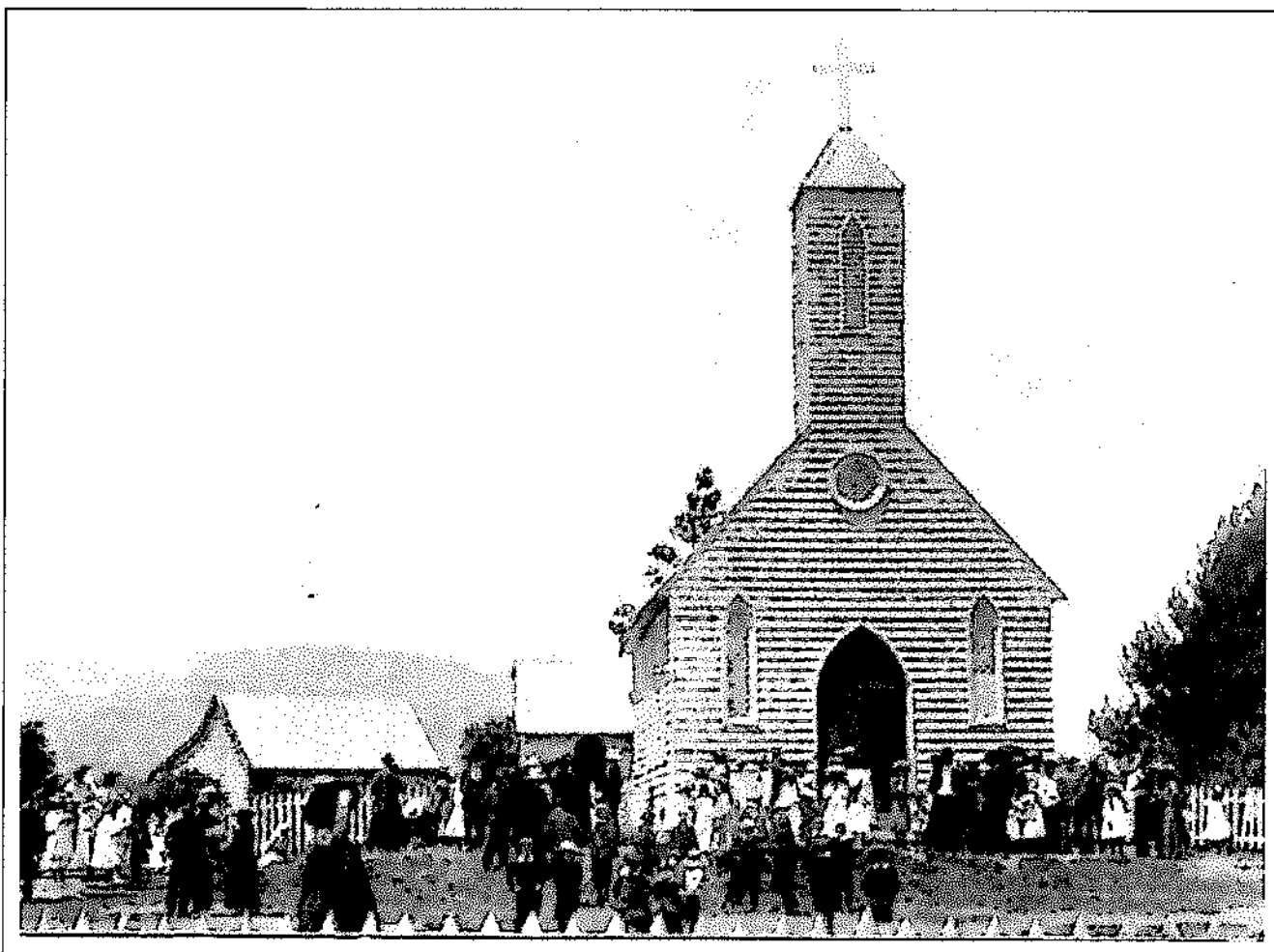


HAEREMAI KI PUKEKARAKA



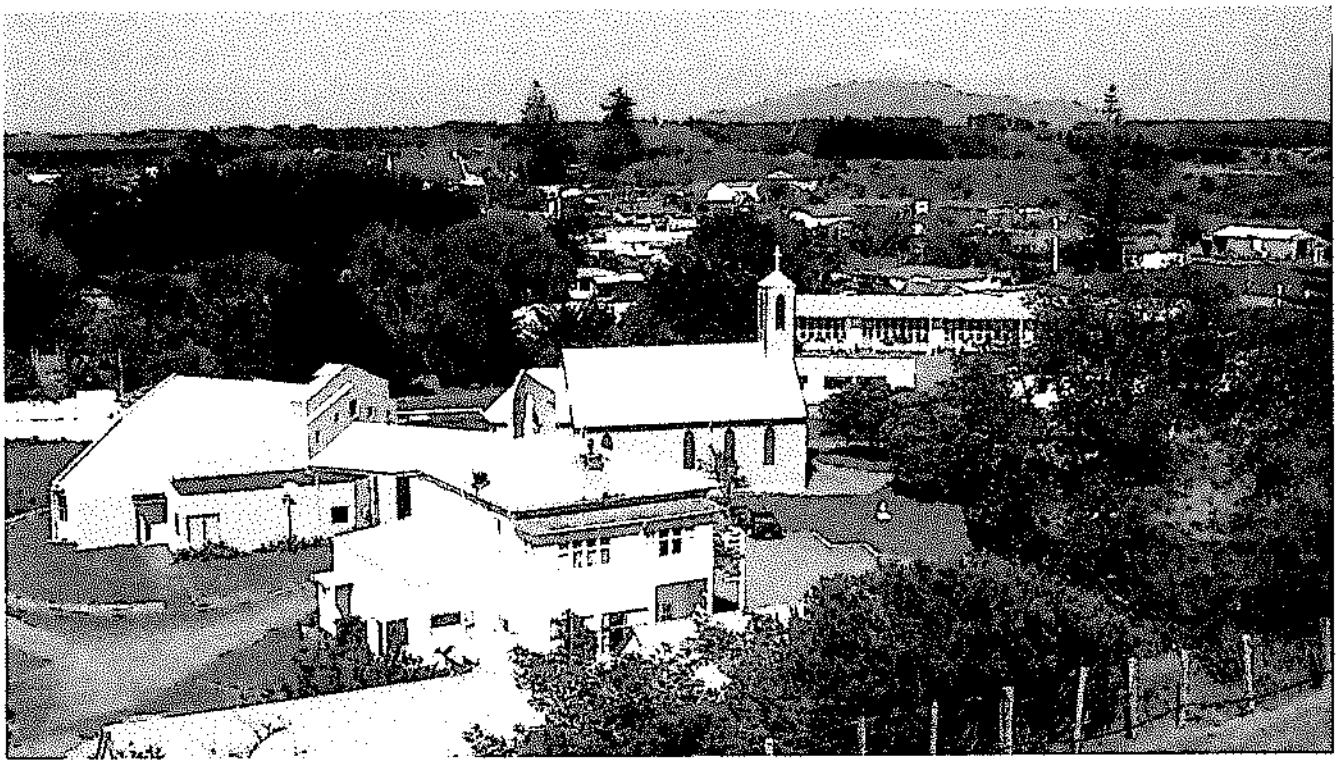
*We welcome you here.
Make yourselves at home.*

*May this Place of Peace
Give you peace too.*

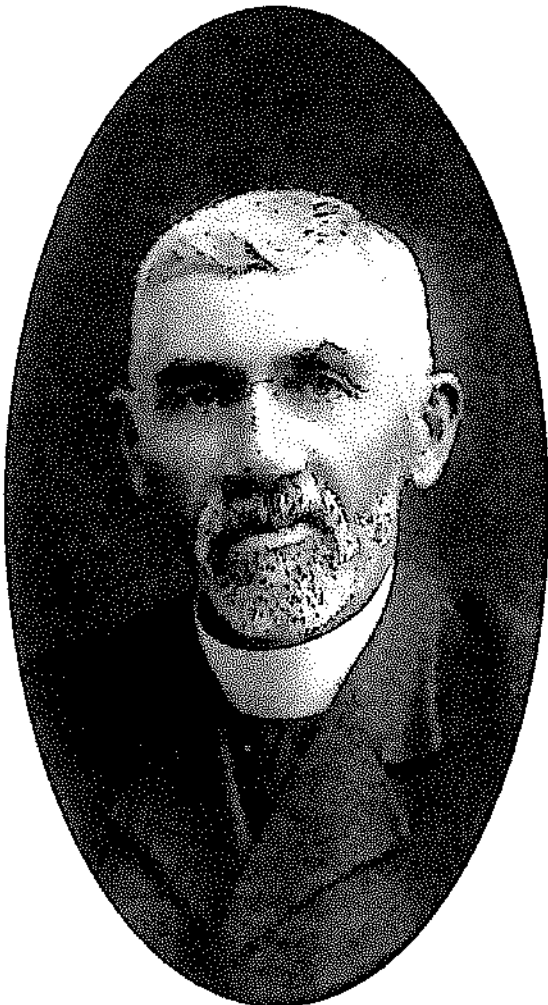
(2 Thessalonians 3:16)

*Haere mai ki tenei marae,
Ki te Kopu o te Whenua,
Ki te Kopu o Hine Nui o te Ao Katoa.*

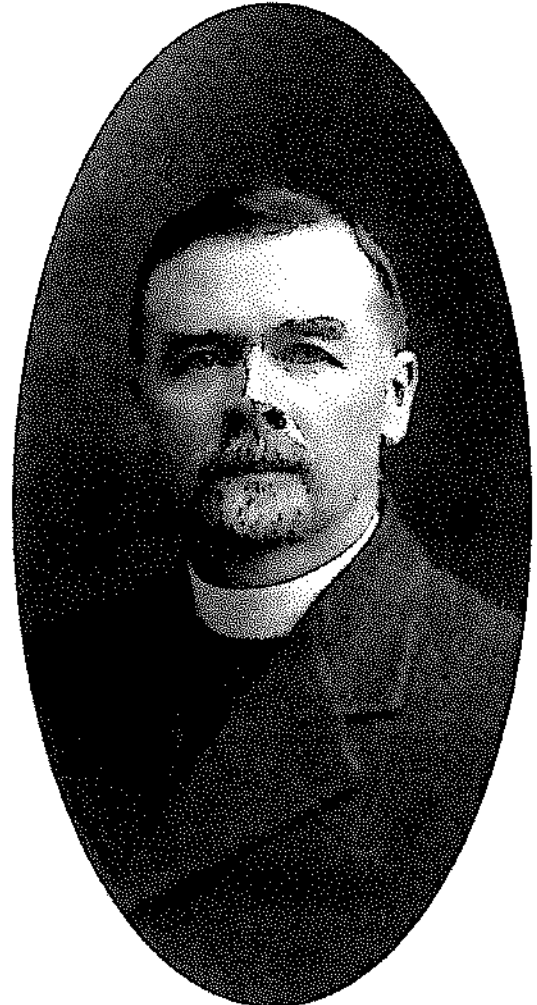




Welcome to Pukekaraka, the hill of the Karaka trees. This land is entrusted to the Catholic Church by the people of Ngati Kapumanawarwhiti. Here is Marae, Presbytery, Church and School.



Father Melu



Father Delachienne

VISITING THE CHURCHES

THE OLD CHURCH

This is the oldest Catholic Church that has been in constant use in Aotearoa/New Zealand. It was ready in 1859, though wood was cut by Maori 1853. It is of mortise and tenon construction, nails used only in fastening the weather boards.

In 1862 Maori gave money for the bell now near the new church.

It was quite spartan originally, and seats and other furnishings were installed and blessed only in 1887 by Bishop Francis Redwood. A choir from the Wanganui River came that day. It was named Our Lady of Victories and is now St Mary's.

The statues of Mary and St Joseph were gifts of the resident priest, Fr Melu's, sisters in France.

The original shingle roof was replaced by corrugated iron in 1889 at the cost of £39.4.7. In 1902 the two front 'side altars' were set up. The statue of St Peter Chanel was added in 1904. He was a Marist priest who was martyred for the Faith in 1841 at Futuna Island in the Pacific. He is patron of the Primary School here.

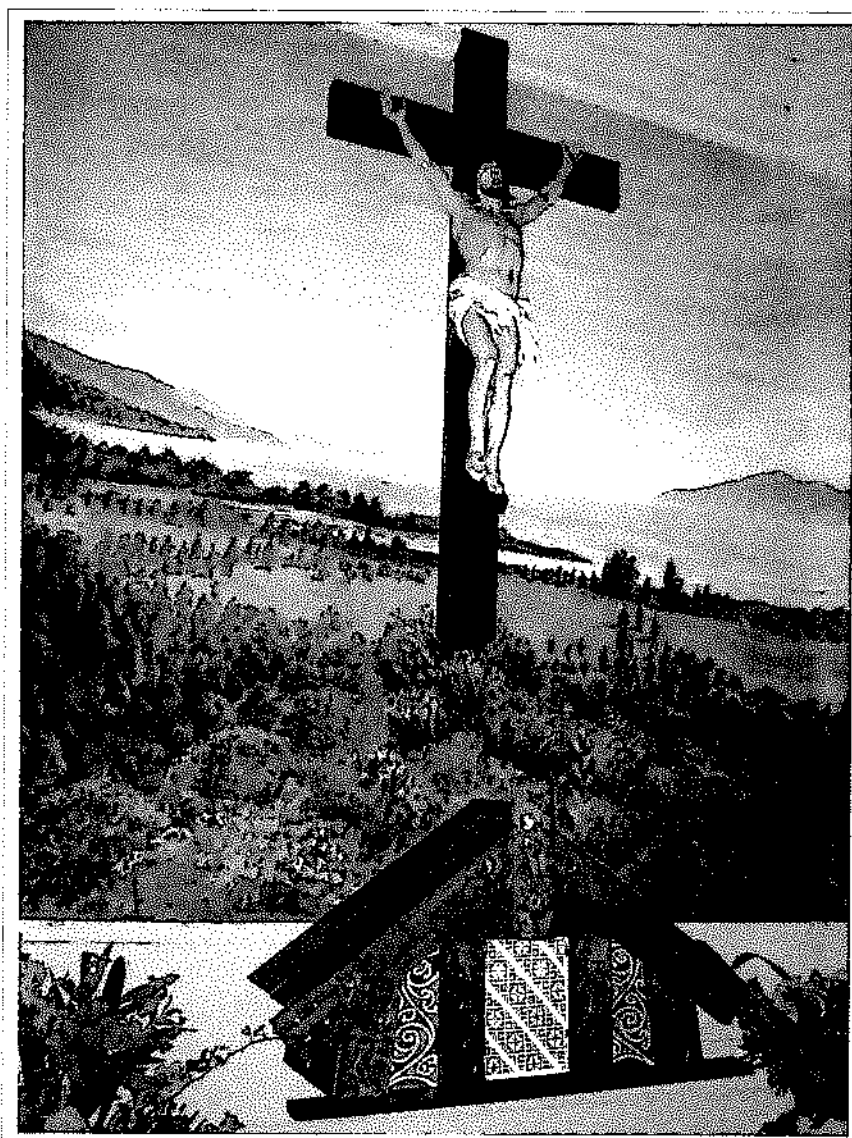
The two stained glass windows up front were given in 1904 at the 60th Jubilee. The school gave St Peter Chanel, and Maori people gave Mary's windows.

In the 1920s the porch was added. In 1929 the bell tower was demolished after the Murchison earthquake. It was

rebuilt in 1992. The Stations of the Cross and other stained glass windows were added in 1942.

1974 saw adaption to meet liturgical renewal. A Maori tabernacle was carved by John Gardiner of Wehiwehi. It is like a 'pataka' or Maori food house, where food is kept safe. An appropriate symbol for the Food of Life. He also carved the sanctuary lamp stand.

The painting of the Otaki district, Tararua Mountains, Otaki River and Kapiti was done by A. Keller in 1974.



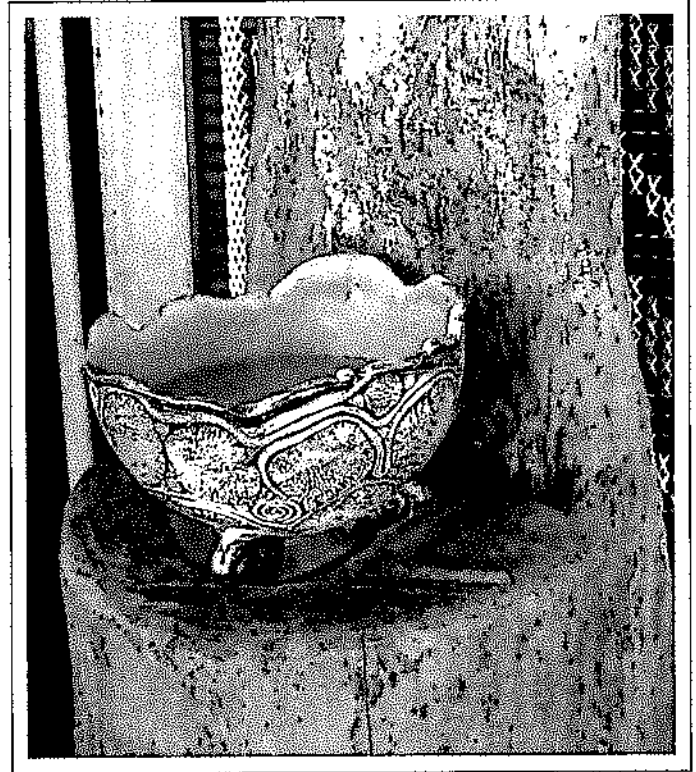
Sanctuary of old church.

THE CHURCH EXTENSION

In 1989 it was agreed to extend the church facilities at St Mary's. In 1992 the present building was blessed and opened.

The Church Extension links with the Marae. It embraces us as we enter through a wall representing the Earth. The three large totara trees stand for God - Father, Son and Holy Spirit. It is like entering a Meeting House - the House of God.

The tukutuku wall which greets us was made by the whole community. Materials were collected and five months spent stitching, sharing memories and putting ourselves into the weaving.



There are three main designs.

The Side Panels: Poutama, The "Stairway to Heaven".

It is symbolic of our journey in Faith. Look at the black as the past, your history and heredity. The white (kiekie) represents the future and life's possibilities. The gold is beach reed (pingao). It is for enlightenment, golden light, human experience transformed by Christ and profound spiritual richness.

Ao Nui is the pattern above the doors.

We look up the stairways to the many heavens. The heavens are the multitude of stars and galaxies and heavenly beings, thrones, powers, dominations, angels and archangels. The gold is the light of God, transfusing all creation and coming to its fullness in the life of Christ. His Mother is the perfect reflection of God's Love. Note the three baskets of knowledge of Maori myth.

The small centre panel is called Kaokao.

It depicts womanly strength, the Holy Spirit who is mothering us. This is the powerhouse of prayer and praise. See the mothers in the gold and the children in the white, waiting to fulfil their potential. So the Life of God comes down to us through the Holy Spirit and Women and Children, and through the Blessed Water here, the water of Life and Love.

*Stop and look at these panels.
They will start talking to you.*

A JOURNEY UP PUKEKARAKA

THE MARAE

Come onto the Marae through the trees. A Marae is a sacred meeting place. This Marae is dedicated to 'Hine Nui o te Ao Katoa' - Mary, Great Woman of the Whole World. Woman of Light.

A Marae is a place where we can get in touch with Mother Earth, Papatuanuku. Here is healing, reconciliation, harmony, peace.

The symbol over the larger meeting house is an "M" for Mary, and a globe representing the World. There are no special carvings or paintings on this house as Mary is our common ancestor or 'tupuna'.

The smaller meeting house is called 'Roma'. Its symbol is the keys Christ gave to St Peter.

WALL OF RECONCILIATION

On the left there is a large stone wall. People from the North (Ngati Muaupoko) came and helped to build this in 1910. This was remarkable as the locals had been their enemies. Hence it is a symbol of reconciliation between people. The plaque reads: "This wall was built by Muaupoko 1910."

You may like to seek harmony for yourself here.



GROTTO TO MARY

Above the wall is a shrine to Mary, the modern Mother of All. First built in 1901, the present grotto dates from 1905. It is like Lourdes in France. Catholics see Mary as Mother of Jesus and Mother of God. She is not God, but she can obtain help for us. A mother wants healing and peace for her children.

STATIONS UP THE HILL OF CALVARY

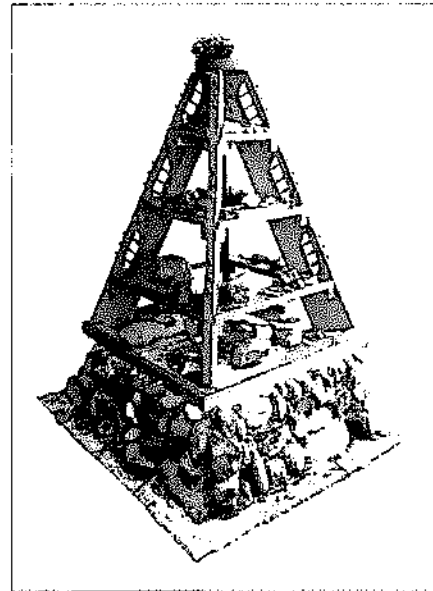
We can wind our way up 'Pukekaraka'. We follow 'stations' which remember Jesus' journey up Calvary. We end with the large cross atop the hill. First made of totara (1894) it is now iron (1953). It is a memorial of St Peter Chanel School pupils who died in World Wars.

CEMETERY

Atop Pukekaraka is a cemetery where there are several ancient Maori graves. It is now used specifically for deceased priests and sisters as decreed by the ancestors of Ngati Kapu.

The white cross on the site marks where the first raupo reed church was built in 1844. The first resident priest, Fr Jean Baptiste Comte, of the Society of Mary, lived in a house nearby. It is remembered by the little 'whare' further down. It is called 'Ohaki' (1894), 'the Keepsake', as a reminder to keep hold of the Faith first brought here.

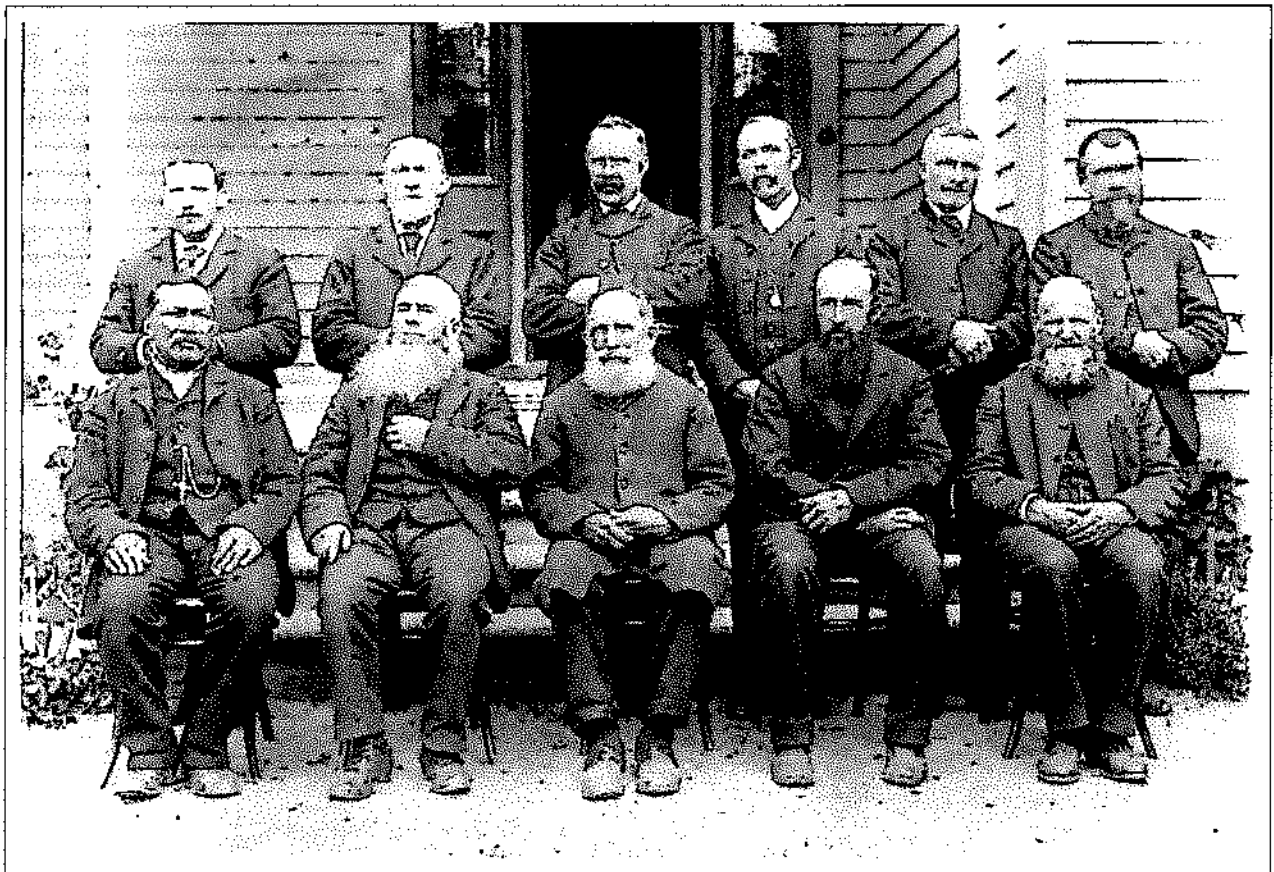
If you look over the northern side of the hill you will see Tainui Marae. The guardians of Pukekaraka, the people of Ngati Kapu, live here. You can also get a good view over Otaki and out to Kapiti, Tè Rauparaha's stronghold and burial place. On a very fine day you can see Taranaki mountain out to sea, Ruapehu to the north and Tapuaenuku in the South Island.



Millenium Cairn

ST PETER

Near the top of the hill is a statue of St Peter. He is holding the Book of the Gospels and the Keys of the Kingdom entrusted to him. Unveiled in 1907, it was placed on a gifted pedestal in 1913. Peter is a symbol of the Rock, 'Kohatu', on which the Catholic Faith is founded.



Marist Brothers

THE CARVING AROUND THE TUKUTUKU

This was done by Chris Gerretzen of the Parata family. They show Mary holding Jesus in her womb. Then, in reflection, Mary present in the whole life of Jesus. See how a cross is formed by the panels.

INSIDE

We are linked with the past, our tradition, both Maori and Pakeha. Through the glass doors we can see the Old Church, testifying to years of Faith.

Now we enter the 'womb' of Faith. Here we contemplate and feel the Presence of God. The four large columns stand for the four corners of the earth. The ochre walls and dark carpet remind us of the life-giving nurturing of Mother Earth. We breathe the Spirit of Life here. Twelve foundation stones surround us.

We focus on the Sanctuary from where the Word of Life, and Food of the Eucharist, come. The Table of the Word and the Table of the Eucharist. Carvings were done by Hone Heke and Henare Perenara. See the

Korowai Cloak on the Baptismal Font. Baptism brings us under God's 'Korowai Aroha', Cloak of Love.

Maori patterns are caught up in the tresses. In the window above the altar, the lone blue star, symbol of Mary, is set in Southern Cross and the twelve stars of scripture (Revelation 12:1).

The Tararuas and Kapiti Coast are woven into the patterns here and on the doors.

The window work was done by Jenni Bennett.

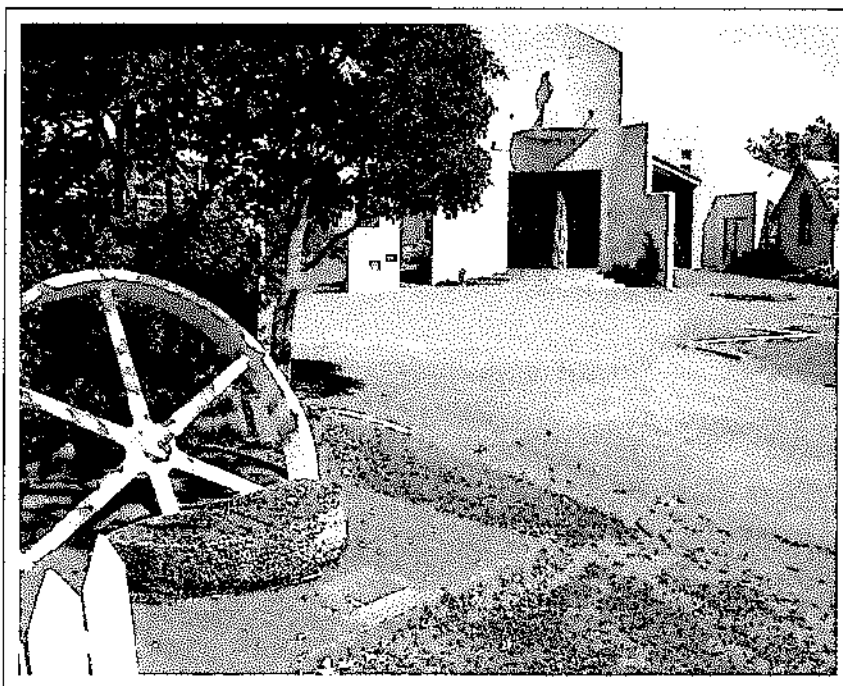
God nurturing us is caught in the light from different windows, especially those high over the back wall. Turn and look up at them.

Pause a while...

Stop, and let the Peace of this holy place settle in your life. May your hurts be healed, your needs met.

Thank you for sharing time with us. We pray a blessing on you and yours and on your Journey.

- The Pukekaraka Family -



Old mill wheel and stone from 1840s.



Fr. Melu with his staunch supporters.

Welcome to Pukekarakara, the hill of the Karaka trees. This land is entrusted to the Catholic Church by the people of Ngati Kapumanawawhiti. Here is Marae, Presbytery, Church and School.

FROM THE OLD CHURCH YOU CAN SEE...



Te Ohaki (1894)



Jubilee Cross (1894)



Presbytery (1897)



Church Extension (1992)



St Peter (1907)



Hine (1905)

Roma (1904)

Marae



YOU ARE
HERE

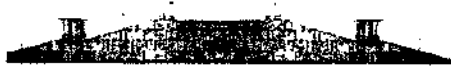
Original Church (1858)



Grotto of Mary (1901)



Old Mill Wheel (1850)



Wall of Reconciliation



Front Entrance
St. Peter Chanel School